

On-campus Jobs at Lipscomb

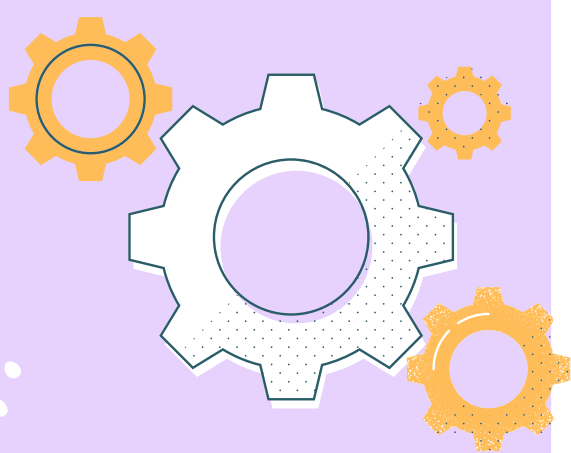
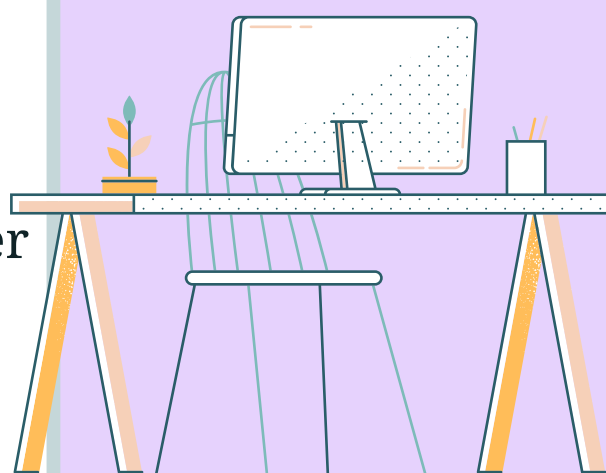


Did you know?

There are **626** student workers employed by Lipscomb University.

How has this number changed the past 5 years?

Even amidst COVID-19, this number has remained stable providing students with jobs.



What are benefits to having an on-campus job?

They provide income for students in a convenient work environment. Also create networking opportunities and form meaningful relationships with other students, faculty and staff.

Apply for an on-campus job today!

Learn more at
<https://recruiting2.ultipro.com/LIP1001L/CMB/JobBoard/6e7649f2-aa46-44d5-969d-70429a5423e6/?q=&o=postedDateDesc>.

